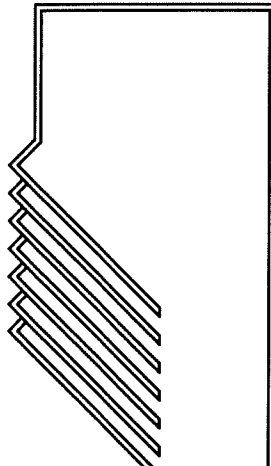


0610/TIMBERCREEK2.VWF
JOB NO: 40610
DATE: 7/6/06
DRAWN BY: GMB
CHECKED BY: AJS

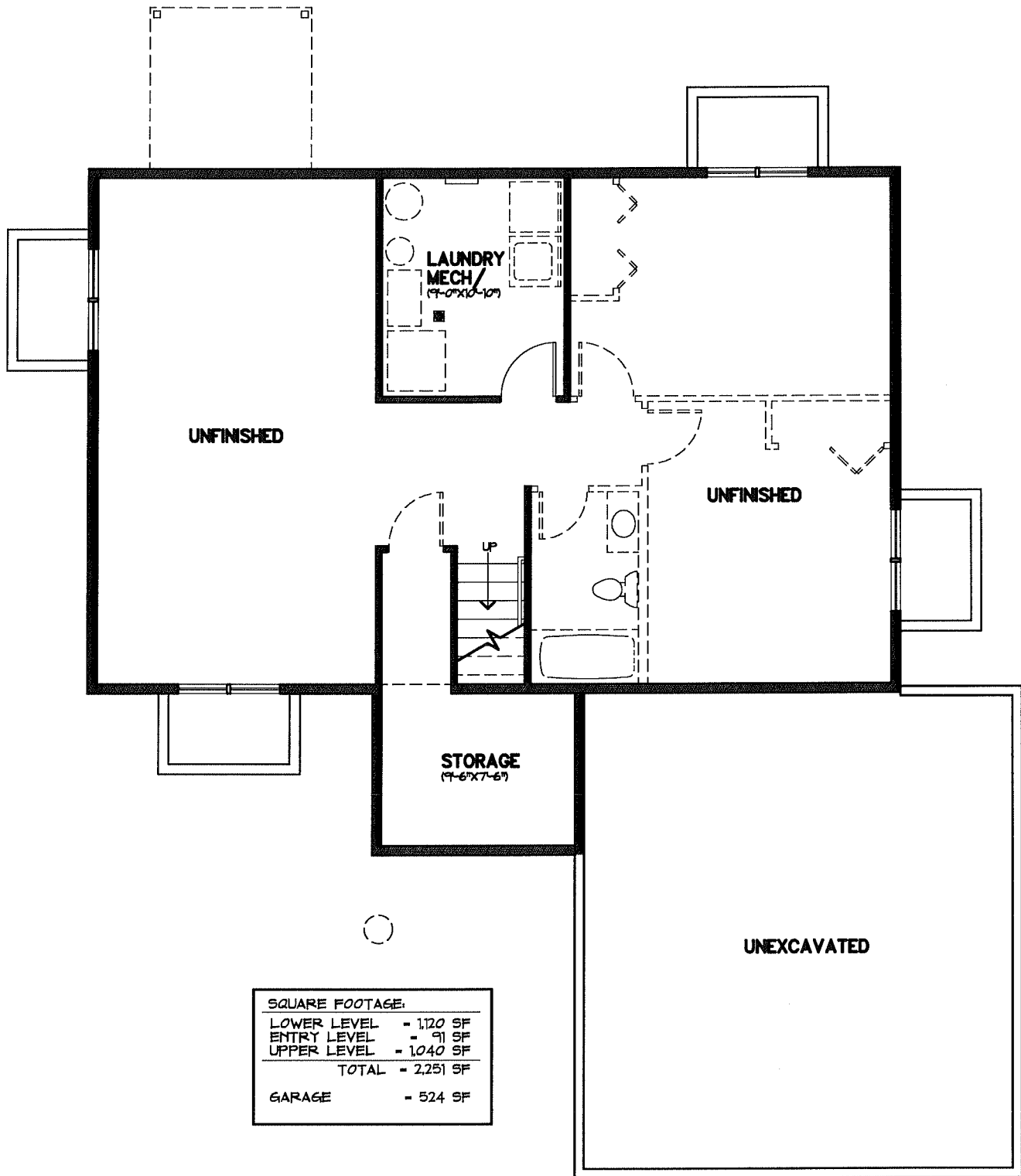


BAKER • HOGAN • HOUX
ARCHITECTURE & PLANNING /A.I.A./P.C.
P.O. BOX 185, 237 3RD AVENUE SE, PERHAM, MINNESOTA 56573 (218) 346-4505

MMCDC HOMES - TIMBER CREEK II

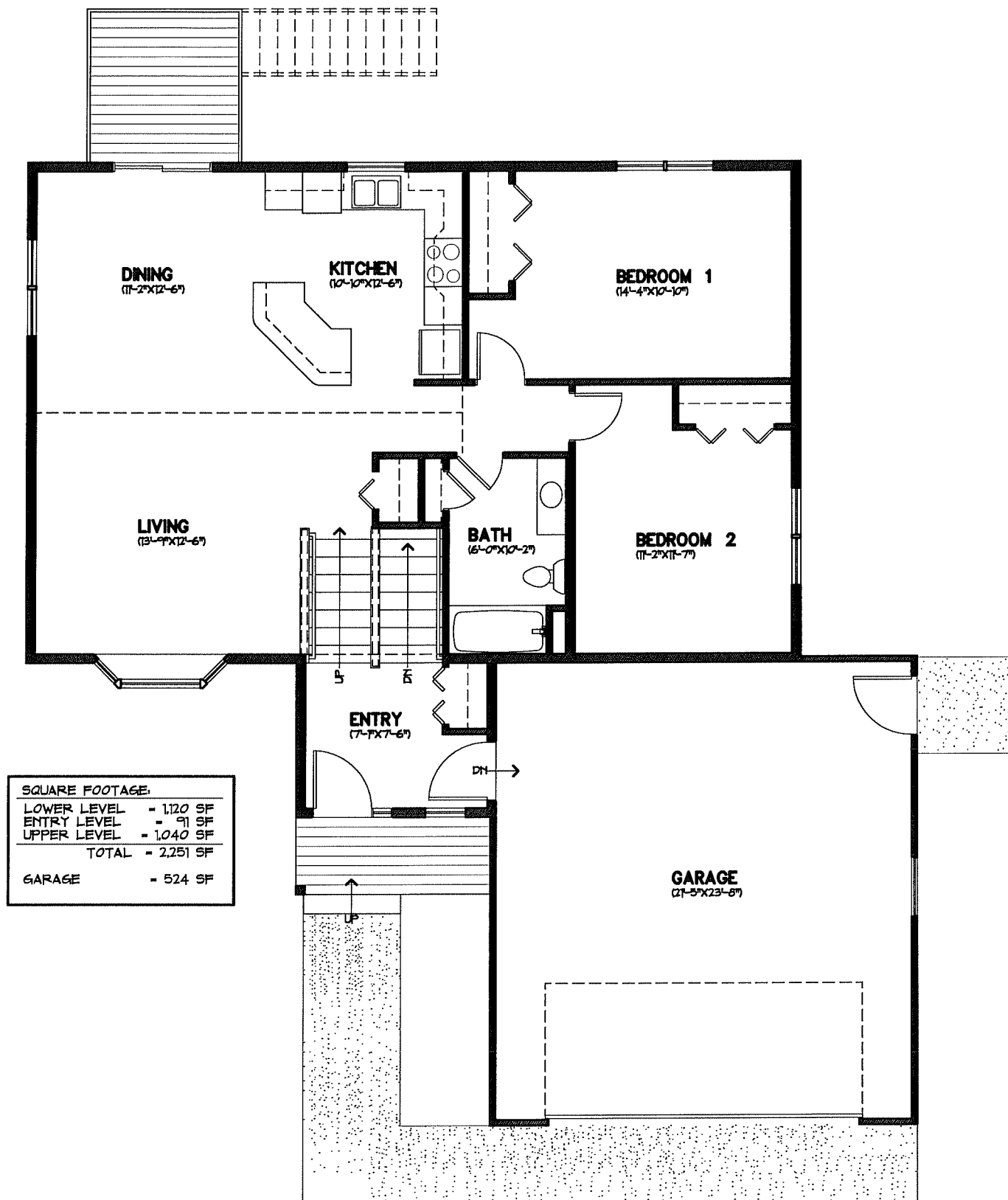
SHEET NUMBER:

A-1



SQUARE FOOTAGE:	
LOWER LEVEL	= 1,120 SF
ENTRY LEVEL	= 91 SF
UPPER LEVEL	= 1,040 SF
TOTAL	= 2,251 SF
GARAGE	= 524 SF

LOWER LEVEL PLAN



UPPER LEVEL PLAN